



Return to group travel

Assess. Plan. Act.

There's a lot that goes into figuring out when, how and where your company will make its return to group travel. But don't let that stop you.

Use these best practices and the latest travel industry information to get started.

Assess.

Determine when it's the right time to return to group travel.

The answer will be different for every company. Here are a few questions to help decide when it will be right for yours:



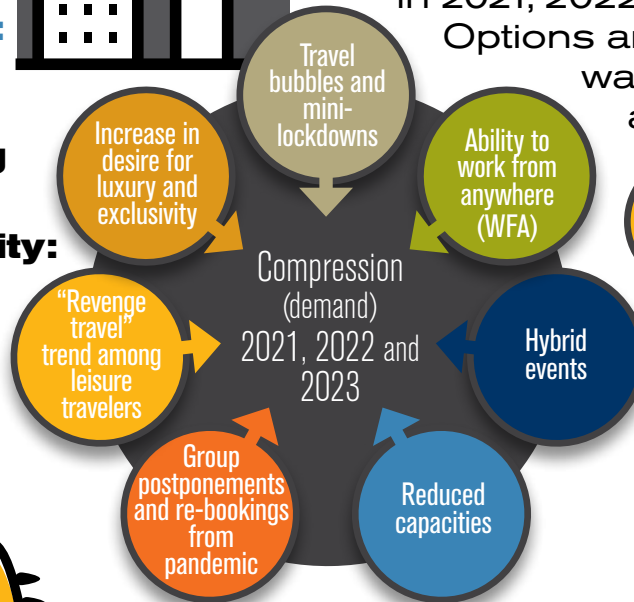
- What** are your corporate travel guidelines?
- Is there a date **when** corporate travel can resume?
- How** does your company define "essential travel"?
- When** can you return to working in the office?
- Is your company currently doing any live events? If so, when is the first live event scheduled?

Tip: Survey your audience to get a pulse check on what their comfort level and preferences are when it comes to traveling. Use this sample or craft your own.

Plan.

HOTELS:

Factors affecting hotel availability:



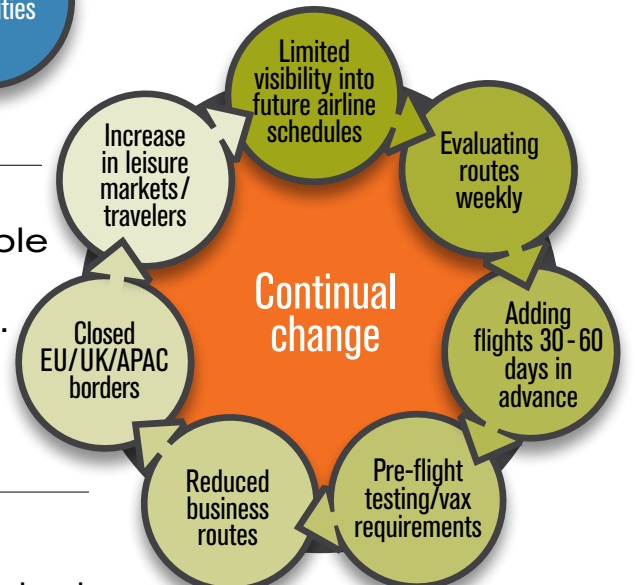
Tip: Remember there's a difference between inability and unwillingness to travel, especially when it comes to cancellation policies.

AIR:



Once fairly predictable in nature, airlines are now under continual change.

Factors affecting air travel:



HEALTH and SAFETY:

BIW has well established standards and practices that prioritize the safety of all event travelers and staff. We aim to make your guests feel confident and comfortable pre-, during and post-event.

Duty of care:

- To research
- To inform
- To recommend
- To plan
- Custom event playbooks, including all contingencies

All facets of disruption:

- Safety/security
- Weather
- Health/medical
- Data
- Financials
- Personal

Act.

Pre-pandemic expectations, practices and ideas are a thing of the past:

- Accelerate decision and booking timelines
- Reimagine events from start to finish
- Consider different destinations
- Engage experts to manage fear, uncertainty and doubt